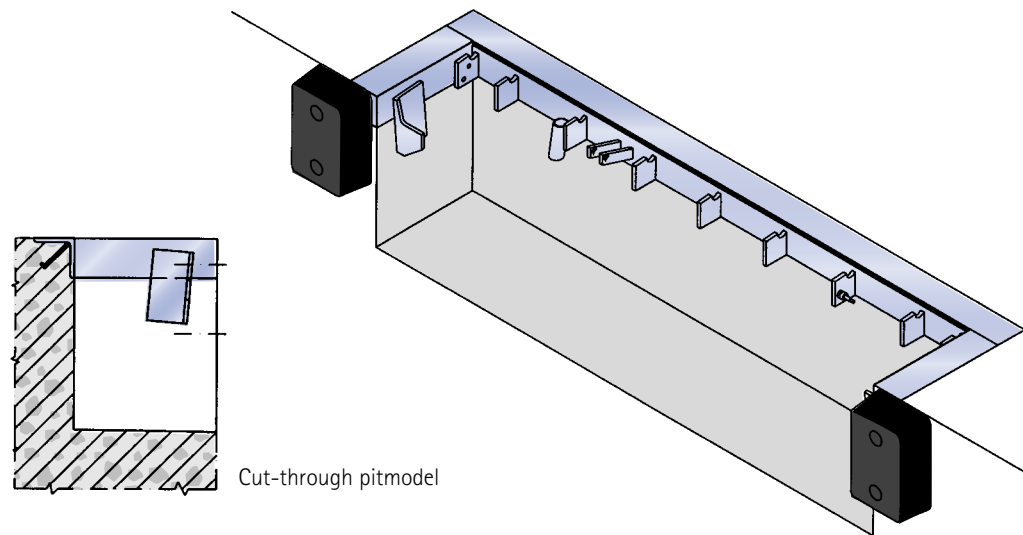


Pitmodel



For new buildings the LA-series dock leveller can be integrated into the loading dock ensuring that the leveller is in line with the front of the dock. To allow the unit to be installed correctly

a galvanised steel cast-in frame/angle is necessary. For front-of-dock fixing a securely cast-in 100mm by 100mm steel angle will suffice. (Both can be supplied by Stertil).

Technical requirements

For information about installation and operation of LA series leveller, contact our sales department who will be pleased to

supply a drawing to suit your needs and any advice required.

Stertil has a comprehensive range of dock products including:

- Curtain shelters and dock seals
- Mechanically and hydraulically operated dock levellers
- Vehicle restraint systems
- Wheel guides
- Dock bumpers
- Mobile yardramps

MANUFACTURER:

STERIL B.V.
Po Box 23
NL-9288 ZG Kootsterille
Tel.: +31-512-334444
Fax: +31-512-332099
E-mail: info@stertil.nl
Internet: www.stertil.nl



A MEMBER OF THE KROYMANS A.R.M.-STOKVIS GROUP

UK DISTRIBUTOR:

STERIL UK LTD,
Stertil House,
Unit A,
Brackmills Business Park,
Caswell Road,
Northampton. NN4 7PW
Tel.: 01604 677384
Fax: 01604765181
E-mail: info@stertiluk.com

LA

SERIES DOCK LEVELLER

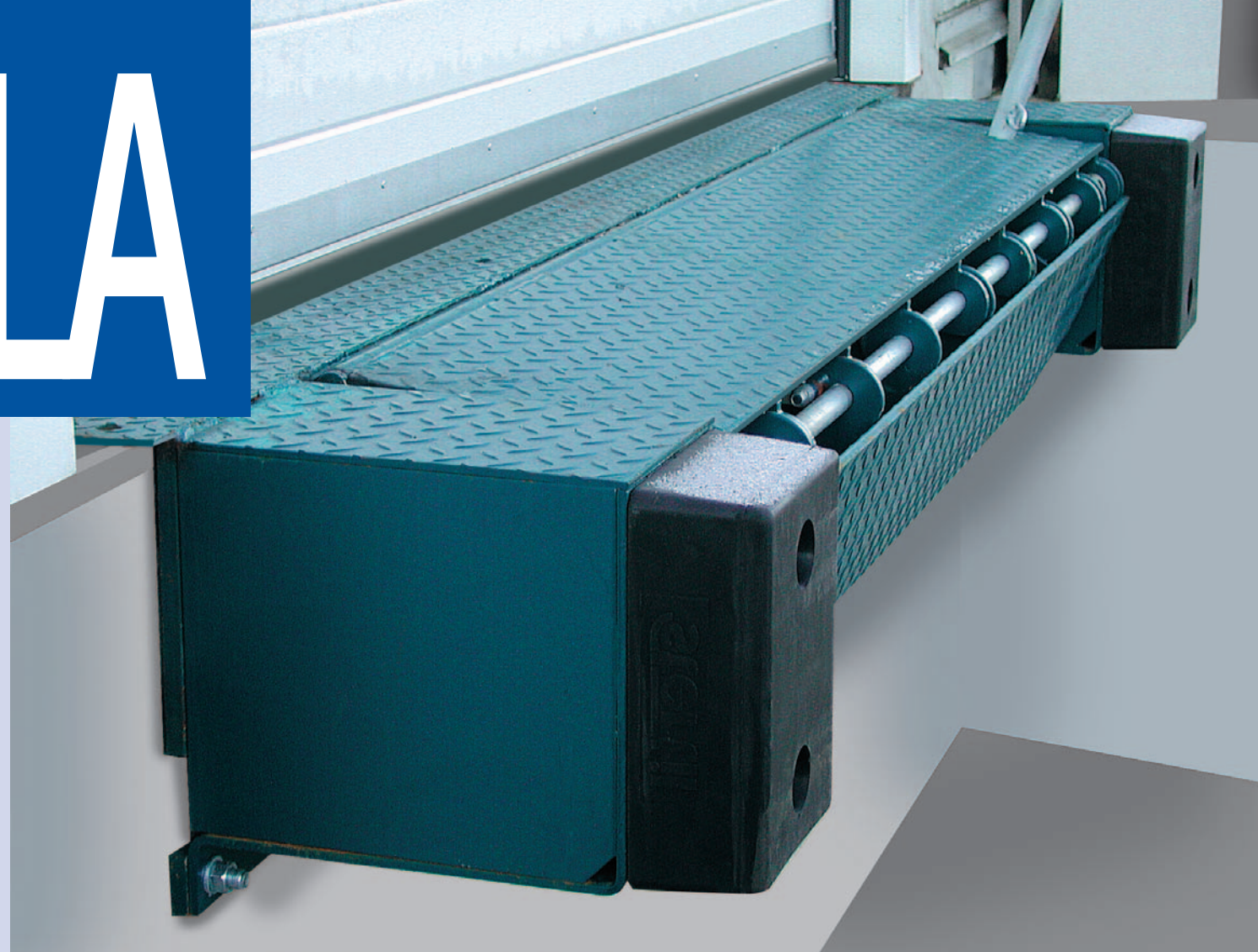


LA DOCK FACE LEVELLERS WITH SIMPLE INSTALLATION

Rights to technical changes reserved © Stertil B.V. 2002



LA



LA SERIES DOCKLEVELLER

- Safe operation
- High capacity
- Low investment
- Including integrated dock bumpers

Safety first

Although we call our LA-series a 'mini-dock leveller', its operation and safety are on the same high levels as other Stertil dock levellers. When the vehicle reverses against the bumpers the lip can be placed on the vehicle deck by using the operating handle. After loading or unloading, the vehicle may depart and the lip will safely fall to the parked position behind the bumpers. This ensures that the next vehicle to dock will do so without damaging the vehicle or the leveller. The Stertil LA-series is suitable where the height differences between warehouse floor and vehicle floor are minimal and is an ideal replacement for unsafe and out of date dock-plates.

Low investment

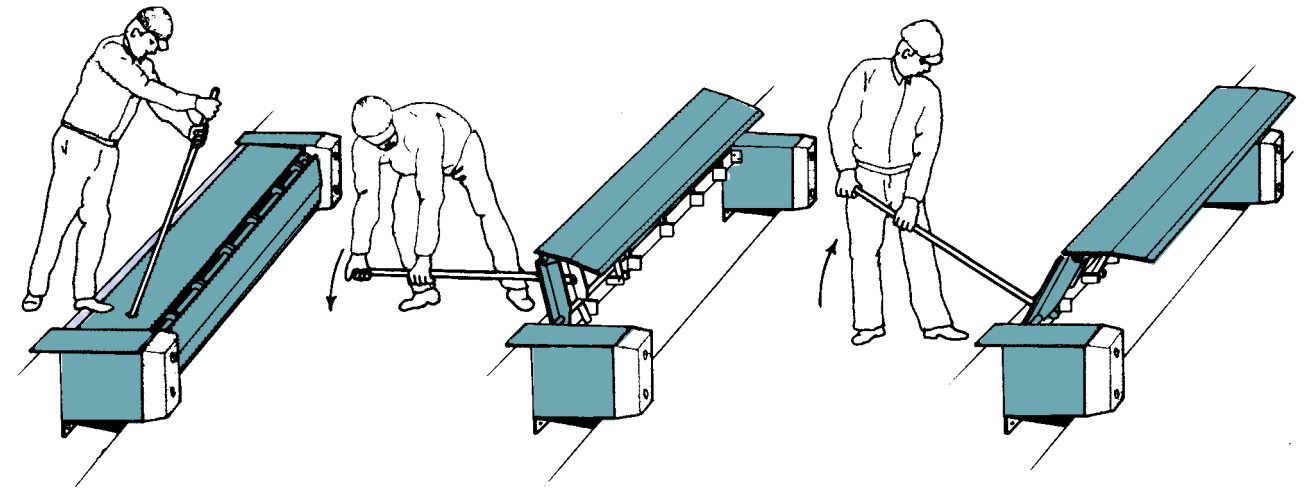
When purchasing a Stertil LA-series unit you are assured of a quality product at an economical price compared to a standard aluminium or steel dock-plate. Although the LA-series leveller may cost a little more than a dock-plate, it

offers more options such as integrated bumpers (size 200 x300 x 100mm), safe and easy operation, (no back injuries due to lifting heavy plates!) and a capacity that exceeds that of standard dock-plates.

High capacity

The Stertil LA-series unit is developed in compliance with the latest European safety standard, EN 1398. It has a capacity of 6000 kg and is suitable for use with all types of loading equipment from manual pallet trucks to fork trucks. The open hinge lip construction, carries a lifetime guarantee and has a solid welded connection between the lip plate and the beams under the deck to ensure the lip angle of 7.5° will be maintained. This is extremely important when loading/unloading vehicles with bed heights above dock level, to ensure that the lip always lays flat on the vehicle floor to avoid the tripping hazard.

Operation



- 1) When the vehicle is correctly positioned at the loading dock the operating handle is removed from its holder and placed in the opening formed in the deck of the leveller.
- 2) The handle is pulled backwards and downwards until horizontal. At this stage the leveller is at its highest position.
- 3) By slowly raising the handle, the lip will automatically be extended and come to rest on the bed of the vehicle.
- 4) After a visual check to ensure safe landing of the lip onto the vehicle deck, the handle is removed and placed back in the holder. The unit is now ready for use to load/unload.

When the loading/unloading is completed the vehicle can depart and the lip will safely fall to the parked position, although it is good working practice to park the lip back in position manually. This operation is carried out by placing the

handle in the opening formed in the deck and pulling it backwards and downwards until the lip just clears the bed of the vehicle - then slowly allowing the unit to return to its parked position.

Specifications

Model	Total width	Platform width	Total length	Lip range beyond bumpers	Bumper projection	Working range above dock	Working range below dock
LA-72 HP	2255 mm	1830 mm	700 mm	245 mm	455 mm	100 mm	100 mm
LA-72 LP	2255 mm	1830 mm	700 mm	245 mm	455 mm	50 mm	80 mm
LA-72 HP-V	2255 mm	1830 mm	735 mm	300 mm	435 mm	100 mm	100 mm
LA-72 LP-V	2255 mm	1830 mm	735 mm	300 mm	435 mm	50 mm	80 mm
LA-2000 HP	2425 mm	2000 mm	700 mm	245 mm	455 mm	100 mm	100 mm
LA-2000 LP	2425 mm	2000 mm	700 mm	245 mm	455 mm	50 mm	80 mm

All models have a capacity of 6000 Kg.

N.B.: The 'HP' (high profile) model is suitable for forklifts or high clearance ride-on trucks where as the 'LP' (low profile) model is more suitable for pallet trucks with limited clearance underneath the forks.