

## Drawings

Stertil dock levellers are designed for various installation methods. Contact the agent at the address listed at the

bottom of this page for further information. See for relevant dimensions our separate pit drawings.

## Safety and warranty

The ISO-9001 certificate for the Stertil organization and the CE-symbol on our levellers is your guarantee of optimum safety and durability. The standard guarantee period is one

year (including labour and travelling expenses). This period can be extended under a maintenance contract concluded with our service department.

### Stertil has a comprehensive range of dock products including:

- Inflatable- and curtain shelters and dockseals
- Mechanically and hydraulically operated dock levellers
- Vehicle restraint systems
- Wheel guides
- Dock bumpers
- Mobile yardramps

MANUFACTURER:

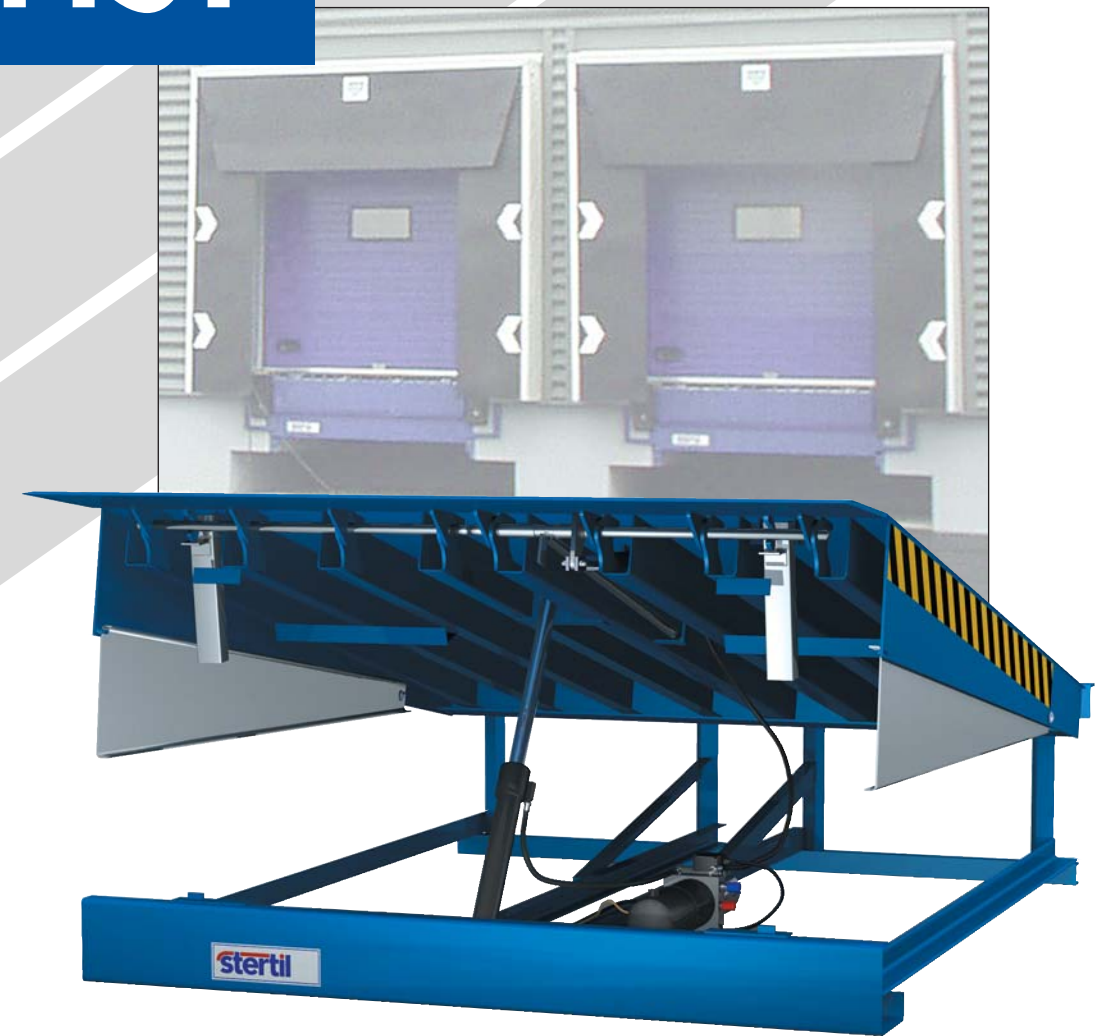
**STERTIL B.V.**  
Postbox 23  
NL-9288 ZG Kootsterille  
Tel.: +31-512-334444  
Fax.: +31-512-332099  
E-mail: info@sterdil.nl  
Internet: www.stertil.nl



A MEMBER OF THE KROYMANS A.R.M.-STOKVIS GROUP

# HSP

## DOCK LEVELLER



## TECHNICAL SPECIFICATION

Rights to technical changes reserved © Stertil B.V. 2005



# HSP



## HSP DOCK LEVELLER

- Electro-hydraulic dock leveller with hinged lip
- Capacity 4 tons dynamic
- Installation possible in closed and open pits

### Operation

The control-box has a 'single-button' operation. At the press of the button the platform rises to its highest position and the lip extends automatically. When the button is released, the platform lowers until the lip rests on the floor of the truck. By pressing the button again, the dock leveller can be brought back into its rest position.



éénknopsbediening      geïntegreerde deurbediening

As the truck drives away earlier, the platform descends to its lowest position and the lip retracts safe into its rest position between the bumpers. A lockable main switch on the control box also serves as an emergency switch. Also you can choose for a control box with door operation buttons integrated (optionally).

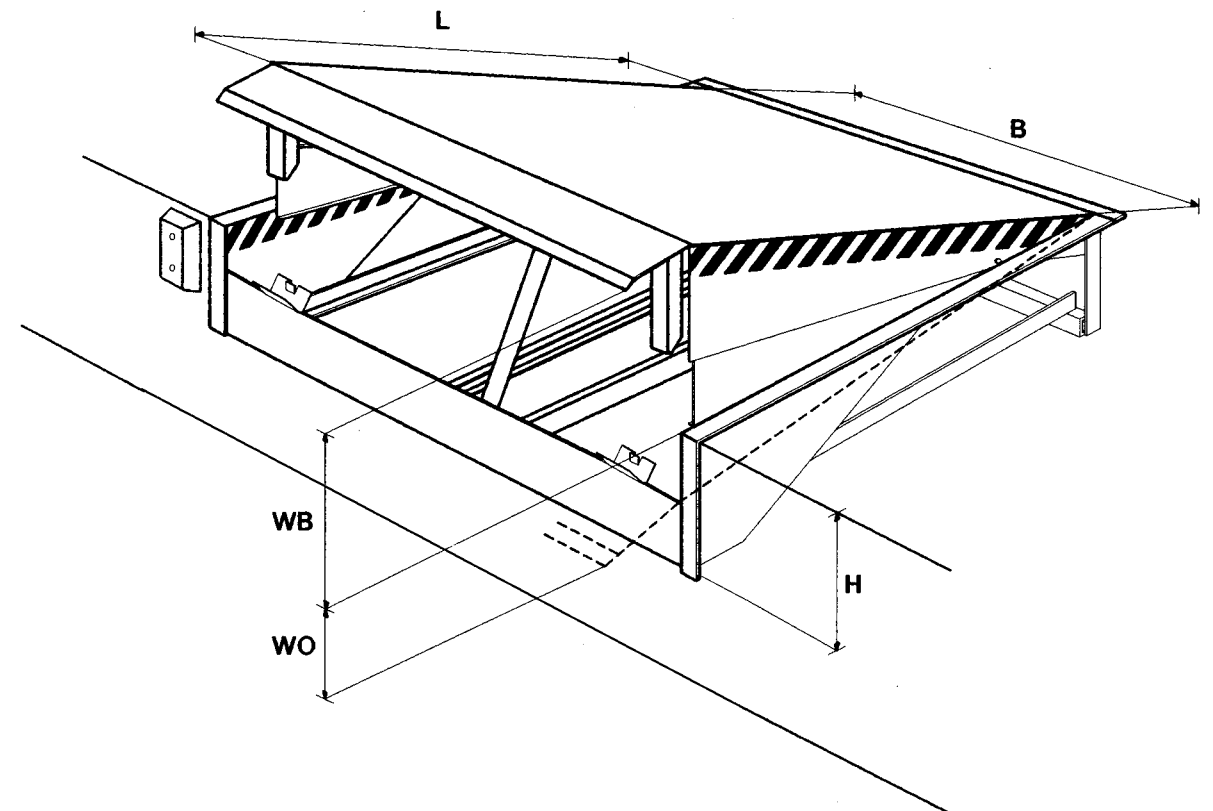
### Technical specifications

- Dynamic capacity 40Kn.
- The Stertil dock leveller type HSP meets all safety requirements of European directive EN 1398.
- The 0.75 kW, 380 / 415 volt, 3 phase motor is built into the single housing along with the hydraulic pump and reservoir and has a built-in emergency stop valve which is operated from the control box.
- Control box - safety class IP 55 with a lockable main switch (also emergency switch) and one push button for moving platform and lip. The red emergency switch can stop the platform in any position. Supplied with 8 meters cabling for the connection between control box and motor.
- The platform and lip are made of tear plate. The platform is built as an orthotrope structure. The thickness of the deck is 5/7 mm, the lip plate is 13/15 mm thick
- The frame is a fully welded, self supporting structure for suspending on the warehouse floor with an integrated curbangle at the back and vertical curb angles at the front (optional).

- The platform can twist 100 mm in either direction to accommodate unevenly loaded trucks without dangerous gaps forming at the rear hinge.
- Both main- and lip cylinders are designed to ensure years of trouble-free operation.
- The patented safety supports provide maximum support on the platform for cross traffic. The open lip hinge retains no dirt, so effective operation is ensured and no lubrication is necessary. The weld connecting the hinge to the platform and lip is so strong that Stertil guarantees this component for life.
- The anti break in protection prevents the leveller from being lowered from the outside where access can be gained under the door.
- The leveller can be brought in its rest position without the need for the truck to drive away. This feature is important when closing the dock door while the truck is still docked.
- Toe protecting plates provide protection for the full working height. Platform level differences are clearly recognizable by the yellow and black markings.
- The maintenance support can be positioned easily keeping the platform and lip in its highest position.
- The panic stop is activated in case of hose rupture or unexpected departure of the truck, when goods or people may still be on the leveller.
- The emergency stop is activated when the red switch on the control box is turned. All movements of platform and lip stop immediately, even under full load.
- The standard protection consists of steel blasting, a primer coating and finishing in ocean blue, RAL 5020. Total layer thickness is 80 micrometres.

### Options for HSP dock levellers

- Control box with door operation buttons integrated.
- vertical curbangles
- Draught exclusion between platform and pit walls.
- Various models of dockbumpers.



### Dimensions and working range of the HSP dock leveller (mm)

Model	L	B	H	WB*	WO
HSP 2020	2000	2000	600	225	280
HSP 2520	2500	2000	600	285	270
HSP 3020	3000	2000	600	345	265

Capacity : 40 Kn  
Standard lip length: 350 mm

\*The working range above dock level is calculated with a lip angle of 7,5°.